



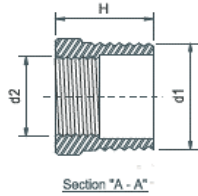
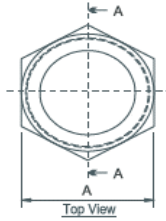
**STAINLESS STEEL  
150 LBS SCREWED FITTINGS  
BSPP (ISO 228-1), BSPT (ISO 7-1), NPT THREAD**

DIMENSION CONFORM TO ASME B16.3 AND ANSI/MSS SP-114-2018 WHERE APPLICABLE

MATERIAL CONFORM TO ASTM A351 GR. CF8 & CF8M

PRESSURE-TEMPERATURE RATINGS 300 PSI (-29 TO 66°C)

MADE BY LOST WAX INVESTMENT CASTING



**HEX BUSHING**

SIZE	A	d1	d2	H	Weight
	(mm)	(Inch)	(Inch)	(mm)	(Kg/Pc)
¼" x ⅛"	17.0	¼"	⅛"	16.5	0.012
⅜" x ⅛"	19.8	⅜"	⅛"	17.0	0.023
⅜" x ¼"	19.8	⅜"	¼"	17.0	0.020
½" x ⅛"	23.0	½"	⅛"	21.0	0.040
½" x ¼"	22.9	½"	¼"	21.0	0.030
½" x ⅜"	22.9	½"	⅜"	21.0	0.030
¾" x ⅛"	27.7	¾"	⅛"	25.4	0.070
¾" x ¼"	28.0	¾"	¼"	25.4	0.060
¾" x ⅜"	28.0	¾"	⅜"	25.4	0.060
¾" x ½"	28.0	¾"	½"	25.4	0.050
1" x ¼"	36.8	1"	¼"	27.5	0.120
1" x ⅜"	36.8	1"	⅜"	27.5	0.110
1" x ½"	36.8	1"	½"	27.5	0.110
1" x ¾"	36.8	1"	¾"	27.5	0.090
1¼" x ¼"	44.7	1¼"	¼"	27.0	0.200
1¼" x ⅜"	44.7	1¼"	⅜"	27.0	0.200
1¼" x ½"	44.7	1¼"	½"	27.0	0.160
1¼" x ¾"	44.7	1¼"	¾"	27.0	0.160
1¼" x 1"	44.7	1¼"	1"	27.0	0.130
1½" x ⅜"	49.7	1½"	⅜"	30.5	0.240
1½" x ½"	49.7	1½"	½"	30.5	0.240
1½" x ¾"	49.7	1½"	¾"	30.5	0.230
1½" x 1"	49.7	1½"	1"	30.5	0.190
1½" x 1¼"	49.7	1½"	1¼"	30.5	0.140
2" x ½"	61.7	2"	½"	34.3	0.390
2" x ¾"	61.7	2"	¾"	34.3	0.380
2" x 1"	61.7	2"	1"	34.3	0.350
2" x 1¼"	61.7	2"	1¼"	34.3	0.310
2" x 1½"	61.7	2"	1½"	34.3	0.260
2½" x ½"	77.0	2½"	½"	38.0	0.680
2½" x ¾"	77.0	2½"	¾"	38.0	0.680
2½" x 1"	77.0	2½"	1"	38.0	0.640
2½" x 1¼"	77.0	2½"	1¼"	38.0	0.590
2½" x 1½"	77.0	2½"	1½"	38.0	0.580
2½" x 2"	77.0	2½"	2"	38.0	0.450
3" x ½"	90.4	3"	½"	39.0	0.890
3" x ¾"	90.4	3"	¾"	39.0	0.890
3" x 1"	90.4	3"	1"	39.0	0.870
3" x 1¼"	90.4	3"	1¼"	39.0	0.850
3" x 1½"	90.4	3"	1½"	39.0	0.840
3" x 2"	90.4	3"	2"	39.0	0.740
3" x 2½"	90.4	3"	2½"	39.0	0.500
4" x ½"	116.2	4"	½"	44.0	1.460
4" x 1"	116.2	4"	1"	44.0	1.460
4" x 1¼"	116.2	4"	1¼"	44.0	1.460
4" x 1½"	116.2	4"	1½"	44.0	1.540
4" x 2"	116.2	4"	2"	44.0	1.460
4" x 2½"	116.2	4"	2½"	44.0	1.380
4" x 3"	116.2	4"	3"	44.0	1.120